



Combined equipment for large diameter logs processing

*Professional machines
to process firewood*

REDLINE

VSP 60.60



VSP 60.60

Combined machine, wholly hydraulic and with manual controls, allows to work with logs up to 600 mm of diameter.

The cutting system is equipped with a solid feeding chain with a length of 2000 mm, conveying the material to the chain trimmer which is able to cut diameters up to 600 mm. The hydraulically controlled trimmer outputs logs with different lengths, between 200 and 500 mm.

The cut logs are conveyed to the splitter by means of a driven rollers table.

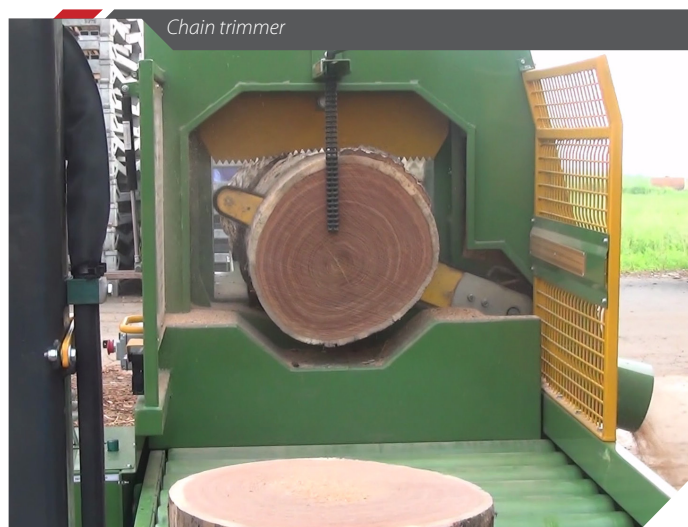
The splitter, with double hydraulic manual control and with a splitting force of 20 tons, includes a

curved wedge with four orbital knives: with this configuration, it is possible to obtain up to five logs each working cycle.

The maximal splitting height is 500 mm for diameters up to 700 mm.

In addition to the splitter, the machine can be equipped with a discharge belt for the worked material, up to 3,3 meters maximal.

The machine has been designed so that a sole operator, alternating the cutting and the splitting operations, can perform efficiently; with two operators working together the performance is extraordinary.



Chain trimmer



Hydraulically driven rollers table for cut logs transferring



PEZZOLATO A 360° COMPANY

REALIZATION

A continuous R&D program supports Pezzolato machines' development and manufacturing. Such activities are totally performed in house; own specialized personnel follows any single step up to the delivery of any machines.

COMPONENTS

All hydraulic, electric and electronic components mounted on Pezzolato machines are supplied exclusively by prime-quality European manufacturers.

ASSISTANCE

Technical assistance is provided quickly and performed by own personnel. Specialized Pezzolato technicians are always available to intervene directly or to support local authorized dealers and service facilities.

SPARE PARTS

Thanks to its large stock, Pezzolato is able to send and deliver any spare parts at customers' premises all over the world, within 24/48 hours.



Wedge with 4 orbital knives to obtain 5 firewood blocks per cycle



Double hydraulic manual control for the splitter

Minimal splitting height: 20 cm

Maximal splitting height: 50 cm



Mobile version with removable wheels for the working phase

Conveyor with PVC band for material discharging; simple solutions or foldable units for discharging material up to 3,3 meters of height



Log support

Feeding chain extension



VT 60 - only cutting unit

VS 60 - only splitting unit



TECHNICAL FEATURES		VSP 60.60	VT 60	VS 60
Logs toothed feeding chain length:	mm	2000	2000	-
Maximum cutting diameter:	mm	600	600	-
Minimum cutting length:	mm	200	200	-
Maximum cutting length:	mm	500	500	-
Driven rollers for cut logs transferring:	n°	12	12	-
Maximum splitting diameter:	mm	700	-	700
Maximum splitting height:	mm	500	-	500
Splitting force	Ton	20	-	20
Minimum tractor power:	Hp	40	-	-
Electric motor power:	kW	18,5	18,5	18,5
Diesel motor power:	Hp	51,7	-	-

Dealer



Pezzolato Officine Costruzioni Meccaniche SpA
Via Provinciale Revello, 89 | 12030 Envie (CN) ITALIA
Tel. +39 0175 278077 | Fax +39 0175 278421 | info@pezzolato.it

www.pezzolato.it